

# ANNUAL REPORT

2015-16

newaste  
●●●●●●●●  
north east waste

PUBLISHED  
NOVEMBER  
2016



---

The North East Waste acknowledges the funding contribution it receives from the NSW Environmental Protection Agency.





# Contents

Foreword 4

Vision and Principles 5

REGIONAL PROJECTS AND ENGAGEMENT 6

NE Waste Communication 7

Regional Waste Strategy Implementation and Initiatives 9

Waste Education and Community Engagement 11

Love Food Hate Waste 14

Business Waste Reduction Project 16

BIN TRIM 17

RENEW 18

Illegal Dumping 19

Household Asbestos Disposal Project 20

Community Recycling Centres 21

Litter Prevention project 23

Hazardous Waste Stores and Household Chemical CleanOut 24

Training 25

The Better Waste Recycling Fund 26

NEW COUNCIL INITIATIVES AND RESOURCE RECOVERY 27

New Council Initiatives 28

Resource Recovery/Waste 35

MANAGEMENT, GOVERNANCE & FINANCE 36

Governance of the Group 37

Meeting and Reporting 37

Sustainability Aims 38

Finances 38

Procurement & Contracts 39

Financial Statement 40



# Foreword

This report outlines the activities and outcomes of North East Waste (NE Waste) for the 2015-16 financial year. NE Waste is a group of seven councils on the Far North Coast of New South Wales working together towards regional solutions to effective waste management. It's member Councils are Ballina Shire, Byron Shire, Clarence Valley, Kyogle, Lismore City, Richmond Valley and Tweed Shire.

In the 2015-16 year we delivered a suite of projects involving and engaging the community, schools, businesses and government. Our core projects involved school and community education, food waste reduction, business engagement in more effective waste management, dealing with problem wastes, Community Recycling Centres, litter, asbestos disposal and illegal dumping. Other priorities included training, research, regional collaboration and fostering relationships with State Government and the broader waste community.

In developing and funding our programs and advising Councils on the changing waste regulatory landscape we have worked closely with the Environmental Trust and the NSW EPA. The Waste Less Recycle More initiative has funded many of our projects and has allowed for program expansion and the provision of additional infrastructure to our Councils. In the 2016-17 year this relationship will continue, and with the experience of the previous year we aim to increase the efficacy of project delivery and refine outcomes.

To cater for new projects our communications platform has expanded with increased media activity and promotion, raising the profile of NEW and highlighting the work we do with local government to improve resource recovery and waste avoidance in the region.

**Jeanie McKillop**  
NE Waste Coordinator



# Vision and Principles

Our vision is to achieve more sustainable waste management and better resource recovery through a proactive and collaborative approach with our member Councils and community.

Deliver targeted and effective projects that engage and build capacity in our communities to achieve improved waste minimisation and management outcomes

Adhere to the principles of sustainability, equity and continuous improvement

Create strong partnerships that allow collaboration and optimise resource sharing opportunities

Communicate and share our knowledge while striving for leadership and innovation in waste



# 1

## REGIONAL PROJECTS AND ENGAGEMENT

NE Waste delivers a suite of projects that are participatory and aim to build the social capital required to engage our community in effective waste management. Our projects and programs support our 7 member Councils in their efforts to provide information, services and resources to assist the region in waste avoidance and resource recovery, and implement change where needed.

# 1.1



## NE Waste Communication

*Aim: Increase the awareness of waste reduction activities across the region and engage the community.*



In the past year the NE Waste communication platform continued to expand. Effective media and publicity tools promote our programs and provide consistent messages about waste management and resource recovery in the region. Media campaigns are a core component of many of our projects and print, radio, television and electronic media are well utilised to maximise our reach. This year we produced:

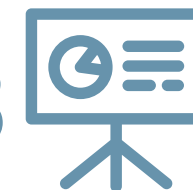
**1400**  
TV Commercials



**2486**  
LIKES

**297**  
RADIO ADS

**64 973**  
VIEWS



**54**  
EDITORIALS

**10**  
RADIO INTERVIEWS



**192**  
PRINT ADS



Projects such as Community Recycling Centres, National Recycling Week, Second Hand Saturday, Illegal Dumping, Love Food Hate Waste, Household Chemical Cleanout and the Household Asbestos Disposal Scheme were all well represented in electronic, visual, social and print media.

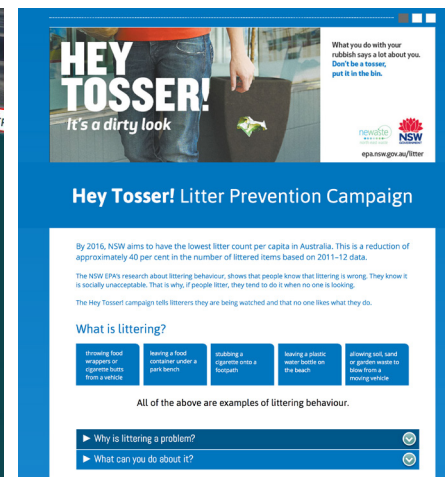
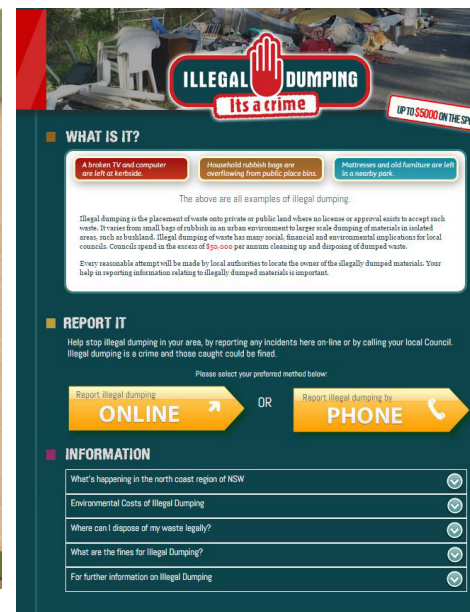
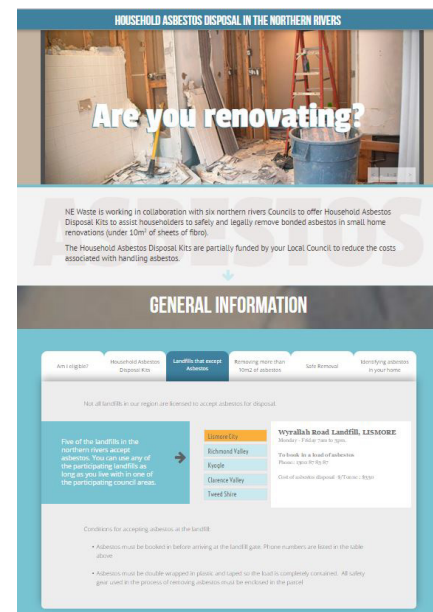
We also utilised local Council media avenues and expertise including Council newsletters, news columns, Mayoral radio shows, websites and Facebook pages.

The NEW website now hosts a range of stand-alone project web-domains for Illegal Dumping, Community Recycling Centres, Secondhand Saturday, Household Asbestos Disposal Scheme and Waste Warriors. All Councils linked their website to NE Waste projects.

The NEWs, NE Waste's quarterly newsletter, has a readership of more than 300 subscribers. It is proving to be a successful way of communicating to our Councils and stakeholders on program activities, outcomes and outputs, as well as highlighting member Council activities.

NE Waste has presented its projects to the 2016 Waste Conference, RENEW forums and EPA workshops. Cross regional communication on program successes and challenges is shared through RENEW NSW, and further regional collaboration on community engagement projects occurs through the Northern Rivers Group of Environmental Educators, established by NE Waste in 2004.

# WEBSITES





# 1.2



## Regional Waste Strategy Implementation and Initiatives

*Aim: To set the strategic direction of waste management in the region through a coordinated and collaborative approach that optimises resource-sharing opportunities and to support regional initiatives.*

2015-16 was the second year under the new regional waste strategy, with reporting to the EPA completed in July 2016. There were 15 projects delivered and evaluated under the Strategy:

- ▶ Coordination and Administration of NEW
- ▶ Education Coordination and Management
- ▶ Strategy Implementation and Regional Initiatives
- ▶ Communications
- ▶ RENEW
- ▶ Training Delivery
- ▶ Love Food Hate Waste
- ▶ Waste Education
- ▶ Business Waste Reduction and BIN TRIM
- ▶ Community Recycling Centres
- ▶ Hazardous Waste Program
- ▶ Illegal Dumping: Clean Up and Prevention
- ▶ The Better Waste Recycling Fund
- ▶ Litter Reduction and Prevention Strategy





These address the key focus areas of the Strategy: Coordination, Increasing Recycling, Waste Avoidance, Managing Problem Wastes, Illegal Dumping and Litter.

Other initiatives undertaken regionally included:

- ▶ The funding of a project that produced a baseline report regarding waste issues on aboriginal lands, funded under the Regional Initiative project. This work has been well received by both State Government and LGNSW for its innovation and success in engaging local communities on waste matters. It will potentially be funded in 2016-17 to look at potential solutions, in collaboration with communities, to address the waste issues prevalent in regional Aboriginal communities.
- ▶ The funding of professional development for member Councils at the Waste 2016 conference in Coffs Harbour in May provided an opportunity for one person from each Council waste section to attend the 2 day conference.
- ▶ Support to attend EPA training was also provided for Council and NEW contractors.
- ▶ Assistance was given to Councils and community groups to complete individual Council grant applications under the WLRM program.

Each project was delivered through a series of actions and the final evaluation of the accompanying action plan indicated that all projects were completed within the prescribed timeframe and within budget. Program planning for 2016-17 was guided by this performance and the Strategy's key objectives.



PUBLISHED ON  
JUNE 2014



# 1.3

## Waste Education and Community Engagement

*Aim: The aim of the NE Waste education and community engagement programs is to promote positive behaviour change and lead to improvements in resource recovery and waste avoidance practices in our regional community.*

NE Waste education programs use a multifaceted approach, carefully tailored to target audiences, recognising local and regional uniqueness. We aim to engage with the values and motivations of the groups we target, and promote skills to adopt resource recovery and waste avoidance in everyday lives. We do this through providing access of our programs to the community through creative arts, media, community events, focus groups, workshops, demonstrations, social marketing and development of appropriate tools and resources.

In 2015-16 the Waste Education program continued to provide schools and community with The Green House mobile education program, Trip to Tip experiential learning to local waste management centres, Second Hand Saturday, support of Council FOGO services, promotion of resource recovery, up to date resources, and a greater variety of programs on offer.

*“Art activities in environmental education can sharpen and refine our perception and make us sensitive for the mystery of the things around us. Through art, we can see and approach the outside world afresh. Art can hit us unexpectedly, catch us off-guard, and sometimes provoke us.”*

Jan van Boeckel  
from the University of Art and Design Helsinki, Finland



- ▶ **The Green House mobile education program** utilised its marquees, education resources, demonstrations and drama education performances to teach, engage and entertain across the region.
- ▶ This year The Green House education program expanded again to offer Love Food Hate Waste cooking demonstrations at local events to enhance community skills in food waste avoidance. These were held at Science Vs Art, Lismore's Upcycle your school holiday activities and the launch of the Lismore Recycled Markets.
- ▶ 35 schools were reached engaging some 5,000 students through drama based education, recycle relay races, waste audit support and student planning workshops;
- ▶ 28 community event days were held including support of Council **FOGO** service implementation;
- ▶ Seven **"Trip to the Tip"** days offered students a first-hand experience of what happens to their waste and recycling once their wheelie bin leaves the kerb-side. This is supplemented with The Green House Education Program also being on-site, as well as K - 6 Workbooks to reinforce learning back at school. 500 educational booklets were distributed;
- ▶ **Second Hand Saturday** was successful again with 950 garage sales held over 2 weekends in September 2015. This event has been held for 7 years and each year its accessibility and coverage improves. The extensive mass media campaign about reuse and recycling, which has involved Facebook, TV, print media, radio, editorials and interviews across the north coast region reinforces the reuse and recycling message. The media reach exceeded 50,000 residents through print, television and digital media campaigns. Evaluation shows; 21,870 page web views (up 68%); Sponsors, TVC (45 airs), Print, Newsletters, (45 ads, 12 publications); Social media – over 1,700 page likes; Evaluation (80 respondents): 12% new garage sale participants ~ 70 wheelie bins 43 trailer loads sold;

- ▶ **National Recycling Week** provided print media support for all 7 Councils. Some Councils were also provided with newsletter content, and each year The Green House attends Clarence Valley Council as part of their National Recycling Week activities.
- ▶ 3 new programs were proposed in June 2016 to complement and support the local government programs.

**I CHOOSE TO RECYCLE**  
because I know it makes a difference to my future.

**97%** of NSW householders say they recycle common household waste\*

**Make sure you know what can be recycled.**

**Check with your local Council:**  
[kyogle.nsw.gov.au](http://kyogle.nsw.gov.au) or [richmondvalley.nsw.gov.au](http://richmondvalley.nsw.gov.au)

NSW EPA \* NSW EPA Community Benchmark Study, Waste Less Recycle More Initiative  
This project is supported by your local Council and the NSW EPA Waste Less, Recycle More initiative funded from the waste levy.

KYOGLE COUNCIL  
Richmond Valley Council



# 1.4

## Love Food Hate Waste

*Aim: The Love Food Hate Waste Challenge provides locally relevant promotional and community engagement activities to reduce food waste, designed in conjunction with our local community. It aims to increase awareness about food waste avoidance issues, and increase skills and adoption of food waste avoidance behaviours in parents with young children.*

NE Waste's Love Food Hate Waste Program has been successful in receiving funding from the NSW Environmental Trust and it's Waste Less Recycle More Initiative. Through the funding received in 2014/15, NE Waste developed The Love Food Hate Waste Challenge program. This provided the framework for 15/16 and NE Waste put together another successful LFHW funding application for The Love Food Hate Waste Challenge Phase 2. In 15/16, NE Waste has achieved the following:

- ▶ Training session held at North Coast TAFE using the training package MIDWASTE developed. It is anticipated that the food waste avoidance education will have reached approximately 1,500 students.
- ▶ Evaluation of LFHW 14/15 program and the Final Report submitted to the Environmental Trust. Evaluation was highly positive with more than 80% of respondents reporting they had adopted at least 3 food waste avoidance behaviours.



- ▶ LFHW Challenge Program Phase 2 devised, and successful in funding. This program has run 7 LFHW workshops, 2 cooking demonstrations, 1 film screening, produced a cookbook, fridge magnet and continues to engage people through its digital and social media campaign. A further 6 cooking demonstrations and 7 workshops are planned for 16-17.
- ▶ 2 LFHW chefs/educators have been contracted to support the delivery of the workshops and cooking demonstrations.
- ▶ A promotional campaign has included ads (7) and editorial in local press (8 editorial/newsletter articles). The TV Commercial produced in 14/15 was rerun for a 3 month intensive period from April – June to coincide with the LFHW workshops.
- ▶ Evaluation so far has been highly positive with approx. 300 people so far attending one of the above activities, and 95% committing to adopt 5 food waste avoidance behaviours.




---

“Great evening - I was unsure of what would be covered but it was like a down to earth Masterchef class with practical advice to use up what I thought were scraps. Very privileged to have such knowledgeable people deliver the presentation.”

---



---

“What an excellently prepared and presented workshop - so many resources and so many useful tips! It’s all so familiar, but often we forget how best to avoid waste, so this workshop was a perfect reminder to reinvigorate those memories!”

---



# 1.5



## Business Waste Reduction Project

*Aim: Achieve measurable waste reduction outcomes and reduce the amount of waste disposed to landfill from businesses across the NE Waste region.*

Business Waste Reduction Project is one of the key deliverables to meet NE Waste's strategy's reduction and avoidance objectives. In 2015-2016 the project continued to provide ongoing assistance to businesses, facilitate community partnerships with social enterprises and regional organisations, for the diversion and reuse of waste material from the Commercial and Industrial (C&I) sector.

The main focus for the 2015- 2016 BWRP delivery was the facilitation of the Waste Warriors Bintrim Project. Overall BWRP objectives were greatly supported via delivery of this project.

The EPA's Waste Less Recycle More fund and the Waste Warriors Bintrim project enabled project promotion, resulting in an additional 65 Waste Warrior businesses registering, and receiving waste education and practical resources through the Waste Warriors toolkit.



The BWRP was promoted alongside the Bintrim project at business and industry group events, and through electronic & traditional media. The project promotion also supported larger organisations that did not fit within the Bintrim criteria, these were provided intensive case management and action plans and support via the BWRP.

An intensive campaign was delivered via the Waste Warriors Facebook page to drive likes and continues to be used as a platform to educate, inspire and recognise regional business supporting recycled and waste reduction.

The WLRM fund also allowed for training of contractors in waste assessment, the Bintrim tool and attendance at Starve the Landfill workshop.

The BWRP also supported the EPA pilot project to trial the new range of Love Food Hate Waste tools for business.

The BWRP continued to communicate business needs to Councils for improved commercial waste outcomes and procedures via regular meetings and project updates throughout the year.





# 1.6

## BIN TRIM

*Aim: To increase recycling and reduce waste sent to landfill from the business sector*

In 2015-16 NEW is continuing the delivery of the second round of the Bin Trim Project through to March 2017.

The project objective is to target 110 SME's that included businesses from the following sectors:

- ▶ Cafes, restaurants, pubs and clubs
- ▶ Caravan parks and holiday accommodation
- ▶ Independent supermarkets

Round 1 of the Bin Trim project provided NE Waste with significantly increased understanding of the C&I waste stream in our region, the needs of businesses, and opportunities and solutions for diversion, particularly of the food waste and comingled waste stream.

Commercial comingled recycling of plastic, glass, aluminium and steel, cardboard and paper is readily accessible from the industry sectors identified for project inclusion. It provides the most cost effective and convenient means of diverting



small quantities of mixed recyclables through the provision of 240L and 360L MGBs, and further opportunity identified includes establishing the business case for the provision of comingled skips. Food waste will be targeted where appropriate services, volume and business commitment are identified.

The overall objectives of this project funding round will be to divert 1319 tonnes per annum from the C&I stream, and to facilitate capacity building across business, Councils and commercial waste providers in the region.

The project has engaged 4 waste assessors, including the project coordinator who provided assessment, action plans and additional support to businesses to participate in the program.

Project outcomes to date include:

- ▶ 154 businesses contacted and informed of the project.
- ▶ 78 businesses assessed, provided with action plans, service information, bin signage, staff training as required, and internal recycling bins.
- ▶ Diverted 249.09 tonnes of waste from landfill with a further 1125 tonnes identified for additional diversion.

# 1.7

## RENEW

---

*Aim: Providing training, professional development and networking opportunities for regional waste groups and personnel*

---

North East Waste is one of eight Voluntary Regional Waste Groups (VRWGs), which operate in rural and regional areas of NSW. All VRWGs are members of RENEWSW and encompass over 95 regional Councils. We work together to improve resource recovery and waste management in regional NSW.

RENEW is supported by the NSW Environmental Protection Agency (EPA) and its primary goal is to highlight the differing waste management issues and priorities within regional areas and implement better waste and sustainable recycling systems. It also serves as an advisory body on matters of regional concern regarding waste management and regulatory change.

This year NE Waste hosted the RENEW forum in February 2015 at Lennox Head giving our regional colleagues an opportunity to see our region and tour the resource

recovery facility at Lismore. The coordinator also attended RENEW meetings in Sydney, Katoomba and Coffs Harbor. Other project coordinators and member Council representatives have also attended these forums.

Collaboration between groups both at and between meetings has been regular and beneficial. The Forum also provided a number of opportunities for groups to be involved in consultations and to provide submissions to the State Government. This year RENEW made submissions on changes to Waste Regulations and the Container Deposit Scheme. This allows for regional perspectives to be heard and considered in the policy design phase.



# 1.8



## Illegal Dumping

*Aim: To reduce illegal dumping across the NE Waste region and improve the Council's capacity to respond to illegal dumping.*

NE Waste has facilitated a Regional Illegal Dumping Program across 7 participating Councils since 2012.

The 2nd Regional Illegal dumping forum was held this year with 15 attendees from 10 different organisations, including Local Government, the NSW EPA, Crown Lands, National Parks and Aboriginal Land Councils. The training connects staff from different sections of Council and other regulatory agencies to encourage a collective approach to dealing with Illegal Dumping.

In order to assist Council's the project delivered a number of actions in 2015-16. These included:

- ▶ 4 media releases were published to raise awareness in the community about incidents of illegal dumping and the potential ramifications it has.
- ▶ The development of a case study for LGA NSW on "Innovative Practices by Regional Groups Tackling Illegal Dumping": to be available on their website
- ▶ Managing enquiries through the ID website: following up on incidents not addressed by Councils and passing on incident reports to relevant Councils outside NE Waste
- ▶ Initiating discussion with compliance staff on increasing reporting categories for ID.
- ▶ Provided feedback on policy development for surveillance cameras. Updated ID surveillance tape and redistributed to compliance staff



Seven individual Illegal Dumping reports were collated for Councils to compare the last 2 years data for ID and identify weaknesses and strengths in our programs. Annual Reporting on grant funding was also completed for the EPA.

A number of funding submissions were also completed this year to assist NEW and other groups to tackle illegal dumping. They were:

- ▶ 2 funding submissions for ALCUP funding grants for Jali and Gugin Gudduba LALC's
- ▶ Clean Up and Prevention funding Round 3 in March 2016
- ▶ Environmental Education grant for education program and storage bays for household wastes on three Land Council Aboriginal Reserves (Jali, Birrigan Gargle and Bogal) in April
- ▶ Assisted Gugin Gudduba Land Council to complete Project Monitoring and Evaluation Plan for the EPA ALCUP grant (May)

This year the project coordinator collated data from 7 individual Councils Illegal dumping reports and produced a Regional ID Report, to compare the last 2 years data for ID and identify weaknesses and strengths in our programs. This will also support future funding applications.

# 1.9

## Household Asbestos Disposal Project

NE Waste has facilitated a Household Asbestos Disposal (HAD) Kit Program for the past 2 years across 6 member Councils; Ballina, Byron, Clarence Valley, Richmond Valley, Kyogle and Lismore. In the first year the program was run as part of a NSW EPA funded program. When the funding ceased in June 2015, NE Waste initiated the funding of HAD kits across the region to encourage safe disposal of asbestos by residents undertaking DIY projects containing asbestos. NE Waste purchased 420 kits, produced a TVC to promote the program on regional TV and implemented the program.

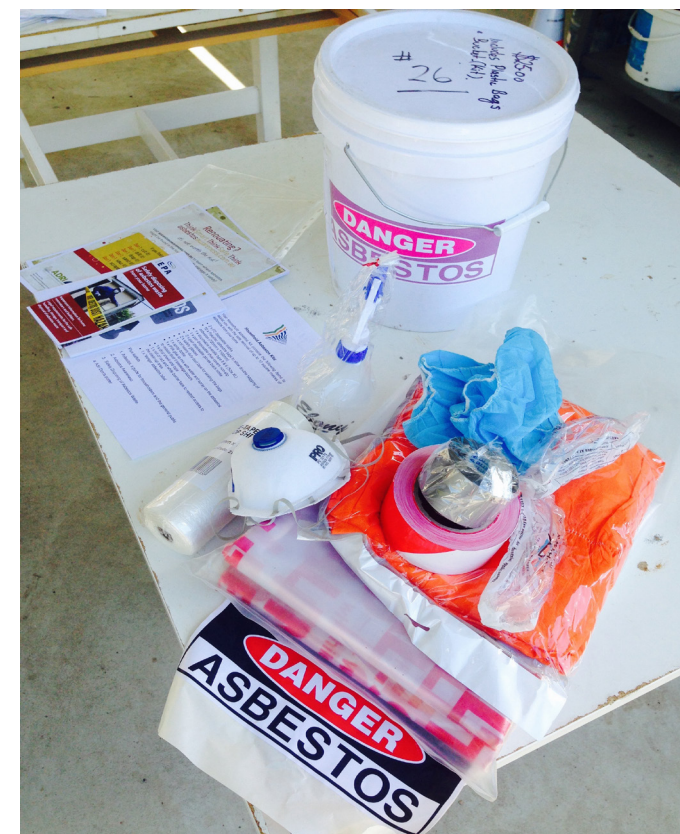
In the 7 months the kits were available, 131 kits were distributed to residents in the region. Only 2 Councils are currently recording the return of kits for disposal. During this period Lismore had 23 returned for disposal and RVC had 3 returned, a return rate of between 38% to 46%.

Hidden asbestos in loads transported to the weigh bridges across the region was highlighted by the Councils as area of growing concern. Across the region, 91 cases of hidden asbestos in loads were recorded with Lismore City Council alone experiencing 62 cases an increase of 400%. The introduction of the Household Asbestos Testing Program is a direct response to this issue.



NE Waste developed a TVC to promote the kits, based on the Asbestos Awareness Campaign run in the previous year. This was screened 321 times on NBN TV from February to the end of July 2016. A poster for the program was distributed digitally to the Councils to use in publication materials. Councils nominated to promote the program utilising their own communication and media team.

Signs were also developed and provided to Council to raise awareness and encourage participation in the scheme. A number of recommendations were made to Councils regarding the on going delivery of this program and Councils will continue to provide kits next year, with NEW monitoring their uptake and Councils requirements.



# 1.10

## Community Recycling Centres



*Aim: To make it easier for residents to recycle problem household waste items and avoid putting them into their kerbside bins, by establishing a NE Waste regional network of free and easily accessible Community Recycling Centres, to receive low toxicity problem wastes.*

2015-16 was the second year of the EPA WLRM funded three year program to roll out 101 Community Recycling Centres (CRCs) across NSW. In 2014-15 NEW secured \$627,764 in funding under 8 separate Environmental Trust grants in two funding rounds, to develop a regional network of 8 CRC. Four of the Round 1 CRC's were constructed and became operational in 2014 -2015 at Lismore, Grafton, Casino and Maclean. In 2015-2016 the final Round 1 CRC was opened at Kyogle (Oct 15) and two of the three Round 2 CRCs opened at Ballina and Byron. The 8th and final CRC is under construction in the Tweed Shire and will be operational in mid to late 2016.

Operational agreements between the EPA and participating Councils are in place until 30 June 2017, allowing the CRC collection contractor Toxfree to collect at each site. So far over 86,000 kgs of household problem wastes, predominantly paints and gas bottles have been dropped off for collection, resulting in significant cost savings for Councils, estimated to be around \$345,000. Each CRC site has been provided with a handle held electronic device (iPad) to facilitate the recording of household problem waste data directly into the EPA's online Drop Off database system, which automates the scheduling for the collection of full stillages and delivery of replacement stillages by the waste contractor.

CRC Location	Total (Kg)
Ballina	2,483.50
Byron	N/A
Casino	13,356.50
Grafton	9,417.50
Kyogle	5,373.00
Lismore	40,537.00
Maclean	14,889.50
Tweed	N/A
<b>Total</b>	<b>86,057</b>

In 2015-2016 EPA annual funding of the NEW Regional CRC Education and Communication Plan (2014-17) was increased to \$65,000 to accommodate the Round 2 CRCs and allowing for the development and implementation of additional CRC communication resources in the second year of the program.

Project outcomes for 15 – 16 included:

- ▶ Official launch of Kyogle CRC (Nov 15) and Ballina and Byron CRC's (Jun 16)
- ▶ Collection of more than 86,000 kg of household problem wastes
- ▶ Creation of an animated CRC TV commercial in collaboration with 6 other VRWGs
- ▶ 1290 paid screenings of the TVC and a similar number of sponsored ads aired on two regional channels (Dec 15 – Jun 16)
- ▶ 137 press ads and 18 media stories published in 11 local publications across 6 LGAs, plus quarterly updates in NE Waste & Council newsletters
- ▶ Creation of a range of CRC (site specific) radio ads
- ▶ 290 paid radio advertisements plus sponsored ads and Community Service Announcements broadcasting from 5 stations
- ▶ Ongoing development of the NE Waste CRC webpage linking to individual Council CRC webpages and a CRC feedback survey
- ▶ More than 795 hits on the NEW CRC website and the completion of 50+ feedback surveys
- ▶ CRC flyers and posters distributed to 33 DIY stores across 7 LGAs and Community Centres, libraries & Post Offices in Ballina & Byron
- ▶ CRC training and information session attended by NEW waste educators/Green House team to facilitate the integration of CRC education into existing programs and events

- ▶ Promotion of CRCs at targeted events including Household Chemical Cleanouts in Kyogle and Richmond Valley, Lismore Container Market, Casino Beef Week, PRIMEX and Lismore Landfill Open Day
- ▶ Extensive collaboration and information sharing on regional delivery of the CRC Education & Communication Plan including a presentation at RENEW Sydney and the 2016 WMAA Waste Conference at Coffs Harbour

During 2016-17 NE Waste will achieve the objective of its Regional Waste and Resource Recovery Strategy in developing a network of 8 CRCs operating across the region. The CRC's provide residents with a free, safe and environmentally sound way of disposing of household problem wastes, while the operational arrangements provide significant cost savings to NEW member councils. The network of 8 CRCs will compliment the region's four Household Hazardous Waste facilities (Tweed, Lismore, Casino, Grafton) and will remove the need for Household Chemical Cleanout events in 2016/17 (following the final events to be held at Ballina and Byron in Sept 16) and beyond by providing convenient and easy to use drop off facilities for both household problem wastes and household chemicals for the community.

The 2016/17 EPA grant funding for the implementation of the Regional CRC Education and Communication Plan (2014-17) will enable NE Waste to achieve the plans objectives of increasing recovery and reducing inappropriate disposal of problem wastes by 15 percent by June 2017, through increased community awareness and participation.



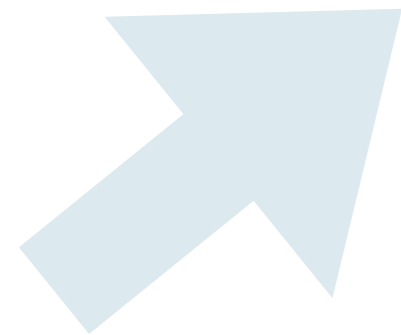
The CRC TV commercial can be viewed at [newaste.org.au/crc.html](http://newaste.org.au/crc.html)  
**Click here to play video.**

# 1.11

## Litter Prevention project

*Aim: To support NE Waste member councils in delivering litter prevention initiatives that best address their local needs while contributing to achieving regional and NSW goals in long term litter reduction.*

NE Waste received funding this year to write a regional litter and implementation plan. The rationale behind this was for waste groups to identify what their particular litter issues were and put forward projects that could address them for contestable funding. The plan was undertaken in house by the coordinator and project coordinators and was submitted for approval to the EPA and in April 2016. Our Plan was accepted and funding of \$80,000 for the first project in the plan was secured in June. This project will look at roadside litter in our region and is been undertake in collaboration with the Roads and Maritime Services.



# 1.12



## Hazardous Waste Stores and Household Chemical Cleanout Days

*Aim: To reduce hazardous waste to landfill*

The Household Chemical Collection Program has been successful in recovering hazardous chemical waste through its collection days and permanent stores. There are now 4 permanent hazardous waste stores servicing the region at Grafton, Lismore and Stotts Creek (Tweed Shire) and one at Nampoona (Richmond Valley). The purpose of the program is to recover hazardous chemical waste from households, including cleaning agents, paints, batteries, fire extinguishers, gas bottles and pesticides. In 2015-16 the EPA again provided \$35,000 for the program and North East Waste Councils have funded the balance. Toxfree was selected as the collection contractor in 2015 and so far have supervised the drop offs at 2 sites, Evans Head and Kyogle. Byron and Ballina will both hold days in September 2016.



### Results Household Chemical Cleanout Days

Council	Sites	Quantity (Kg)	Collection Cost (excl GST)
Kyogle	1	120	\$7,202
Richmond Valley	1	137	\$7,243
<b>TOTAL</b>		<b>257 Kg</b>	<b>\$14,445</b>

In addition to the collection costs there are costs incurred from the promotion of the scheme and the coordination of Councils and the contractor. After many years of holding these events our communities have come to expect an annual opportunity to dispose of their chemical wastes at no cost. However, this year in Community Recycling Centres have begun operation in 6 Council areas, eliminating several problem wastes from the collections. As CRC's are increasingly utilized by the public the quantity collected of household problem wastes at Household Chemical Clean out days will diminish. Due to the increasing costs of holding the HCC days it is expected that NE Waste will reduce their regularity in the future.





# 1.13

## Training

*Aim: Provide training, professional development and networking opportunities for landfill and education staff in the region.*



Training and professional development is an important part of making NEW a cohesive and collaborative entity. It enables contractors and Council staff to build skills that enable an enhanced performance in their roles. In 2015- 16 a number of training events were provided by NE Waste and the EPA.

- ▶ Asbestos Awareness Training was held at
- ▶ Social Media Training was held in Byron by Dotti Media to assist contractors in adding this element of communication to our campaigns and promotions.
- ▶ Bin Trim Training
- ▶ Aboriginal Awareness Training
- ▶ Kimbrikki Education Workshop
- ▶ Love Food Hate Waste workshop
- ▶ Litter Awareness training - April 16 (run by EPA/ALERT)

- ▶ Starve the Landfill - Feb 16 (EPA)
- ▶ LFHW training session held with North Coast TAFE teachers participating run by NE Waste
- ▶ CRC training for the Green House team
- ▶ A number of workshop were held to support grant applications under the Waste Less Recycle More initiative. NEW sponsored Council and contractors to attend as required.

Of particular note this year was the Aboriginal Awareness Training, hosted by the EPA in Ballina and well attended by councils. Feedback from staff after the event indicated that their capacity to consult with aboriginal members of their community was increased and that insight had been gained into the particular and unique circumstances that impact on aboriginal communities in our region.

# 1.14

## The Better Waste Recycling Fund

*Aim: To support voluntary waste groups with regional coordination and infrastructure planning*



In 2015-16 the funds were used to purchase 3 mobile roadside electronic signs to assist in raising community awareness and alerting the community to events such as the Household Chemical Cleanout days, closures and events. The signs are used on site at the landfill or transfer station and can assist in traffic management also. Four other signs were purchased in 2014-15 so this completed the coverage of all Councils.

In 2015-16 more than 250,000 vehicles pass through our regional facilities gates and were exposed to messages from Councils about covering their loads, asbestos fines and upcoming events.



# 2

## NEW COUNCIL INITIATIVES AND RESOURCE RECOVERY

The recovery of resources across the region through shared contracts and individual Council effort continues to increase. We continue to look for opportunities and initiatives to increase diversion through recycling, removing problematic elements from our landfills and encouraging the reuse of limited resources.

# 2.1

## New Council Initiatives

*During 2015-16 NE Waste Councils implemented a range of new programs and services. Key changes and achievements are outlined below.*



### Ballina Shire Council

- ▶ The construction of a Community Recycling Centre at the Waste Management Centre at Southern Cross Drive that began operations in May 2016 through EPA funding of \$109498 secured by NE Waste.
- ▶ Ballina Councils new tips shop was opened in February this year and was funded from the Better Waste Recycling fund for \$120,000.
- ▶ The waste staff at Ballina Shire has also increased this year with 2 new customer service and weighbridge employees and a new Waste Management Strategic Officer.
- ▶ In order to increase leachate diversion over 1000 vetiver grass seedlings were planted. It has increased diversion by 6% in the past 6 months.



## Byron Shire Council

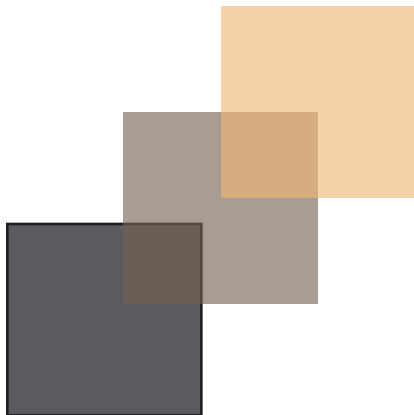


- ▶ A new 7-10 year waste and resource recovery collection contract and renewal of contract with Lismore City Council for acceptance of kerbside Organics and Recycling was negotiated.
- ▶ Planning and implementation of the 3-bin collection service was implemented after a successful application for \$735K grant funding from NSW EPA. State Government. 10,500 bins, caddies and liners were rolled out and a comprehensive community education and communication campaign was launched and 3,500 tonnes of organics material diverted from landfill in the initial 9 months of the service.
- ▶ A new Waste Track collection service software system delivering process improvement, contract management, contractor accountability and customer service benefits was implemented.
- ▶ In collaboration with North East Waste, receipt of 112K grant funding for construction of a Community Recycling Centre for problem waste streams at Byron Resource Recovery Centre. Construction of centre now complete and operational.
- ▶ Successfully gaining a contract with the Federal Government under the Emissions Reduction Fund program for the Mycoum Landfill Gas Carbon Farming Initiative Offsets Project. This contract will deliver a revenue stream of 170K over 7 years to offset a proportion of LFG management operational costs.
- ▶ Development and implementation of the Waste Wise Schools education program. 8 schools in the Shire registered for the program.



## Clarence Valley Council

- ▶ In June 2016 the Clarence Valley Environmental Learning Facility (ELF) was opened. The centre provides a great meeting and learning venue and houses resources to educate all ages in sustainability and the environment. A new office was also a part of the complex and staff have been operating from it since December 2015. The launch included planting with schools groups and a visit from Dirtgirl and Costa.
- ▶ A new transfer station at Illuka was constructed and began operations in Dec 2015. It is an innovative design, using Wastewell buckets that make unloading easy for residents.
- ▶ A second exit weighbridge was completed with new software and a new access road.



# Kyogle Council

- ▶ A new Community Recycling Centre was completed and officially opened in October 2015.
- ▶ Council began pasteurising its green waste on site and successfully used the product to assist with the closure of the Woodenbong Landfill.
- ▶ A new cell approval process was undertaken this year, with a new cell at the Kyogle landfill approved.
- ▶ The 'Kyogle Recycles' brochure was produced and promoted to encourage the community to recycle and do it correctly.
- ▶ Three waste and recycling presentations to community groups were held as well as a composting demonstration to a community group at Kyogle landfill. This was well received with the group forwarding letters of appreciation to NEW.
- ▶ A roof was installed over the comingled recyclables drop-off area at Kyogle landfill to provide shelter for customers and exclude water from product.
- ▶ The VMS board at Kyogle landfill was used to advise of waste management changes, and good news stories eg 10 tonnes batteries recycled 2014/2015.
- ▶ Council continues to assist with litter reduction at events by providing bins and removal, managing waste and recyclables at five events each year.



**Kyogle Recycles**

**What can I recycle in my split wheelie bin?**

**Paper and Cardboard**

- Newspapers, magazines, junk mail and egg cartons.
- Clean paper towel can be recycled.
- Flatten boxes for more space in the recycling side.

**Glass**

- All glass bottles and jars can be recycled.
- No Pyrex, glassware, mirrors or sheet glass (windows and shower screens).

**Plastic**

- All plastic bottles and containers.
- No scrunchy plastics in the recycling side (if you can scrunch it put it in the garbage side).
- Note: Scrunchy plastic includes plastic bags, cling wrap, sticky tape, pallet wrap and packaging straps.

**Steel and Aluminium**

- Recycle steel cans, aluminium (including aluminium foil) and empty aerosol cans. Please rinse to remove most food.

**What can I recycle for FREE at Kyogle landfill?**

**Paper and cardboard**

- Newspapers, magazines, junk mail and egg cartons.
- Clean paper towel can be recycled.

**Glass**

- All glass bottles and jars can be recycled.
- Pyrex, glassware, mirrors or sheet glass (windows and shower screens) **cannot be included with mixed recyclables**. Ask staff whether they may be dropped off at the tip shop.

**Plastic**

- All plastic bottles and containers.
- No scrunchy plastics (see note).

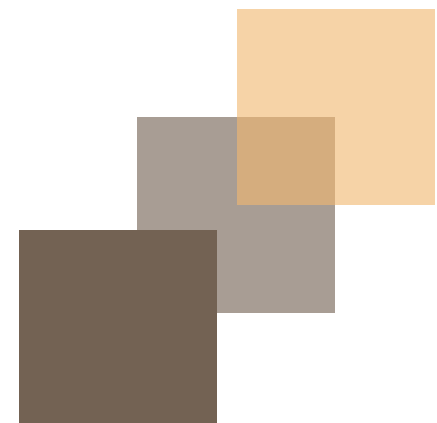
**Steel and Aluminium**

- Steel cans, aluminium off-cuts and empty aerosol cans can be included with mixed recyclables. Please rinse to remove most food.
- There are separate bags for aluminium cans.
- Large steel items, including degassed fridges and freezers, may be dropped off at scrap metal area.

**Recycling Household Problem Waste at Kyogle landfill**

You can drop off: gas bottles, fire extinguishers, paint, fluoro globes and tubes, car batteries, household batteries, motor oils, other oils, smoke detectors and mobile phones and accessories. Only household quantities accepted (20kg or 20L maximum container size).

Continued over page.





## Lismore City Council



In 2015-16 Lismore Council completed a number of changes to their site.

- ▶ They began a \$700,000 expansion of their organics processing facility by installing a hard stand aerated composting floor. They received funding from the NSW EPA to assist in the upgrade.
- ▶ The new technology is capable of processing 25,000 tonnes of food and garden organics annually and will halve composting time, allowing Council to meet the increasing demand for its 100% organic compost products. The Aero-Sorb compost system aerates the compost through a system of pipes underneath the compost piles, reducing the need to turn them. This will halve the existing 16 to 20-week composting process and reduce fuel costs as well as saving on electricity and water usage.
- ▶ Council also undertook the reconfiguration of the glass plant and installed an infeed hopper.
- ▶ Self-separated glass now goes to the plant directly instead of through the MRF.
- ▶ A Second weighbridge was installed to improve the flow of traffic on site.
- ▶ The Lismore Recycled Market was also launched in March to encourage sustainability and giving old materials and products a new life. Stallholders sell their upcycled wares from a series of purpose-built shipping containers next door to the Lismore Revolve Shop, which is also open on the day.
- ▶ A new landfill cell opened that will provide an additional 8-10 years of life to the site. It has a capacity of 330,000 cubic metres and utilises a with a new geo-synthetic liner to ensure safer containment from disposal.







## Richmond Valley Council



- ▶ In 2015-16 RVC launched a new green bin service that included a food organics service to 7400 households in the region. The product is been processed at Lismore Resource Recovery Centre.
- ▶ A new Waste Strategy was commissioned this year to layout the planning horizon for waste management in the Shire. Its development is continuing.
- ▶ There was an increase in staff and this has expanded the capacity at Namoon Landfill to deal with new CRC and FERRC. A new waste overseer and a data and weighbridge officer were appointed in 15-16.
- ▶ Council introduced an optional 360 l recycling bins for commercial and residential properties to increase recycling capacity and promote diversion.
- ▶ The remaining footprint of cell 6 is been redesigned and a final capping plan is underdevelopment.
- ▶ RVC were successful in obtaining 2 grant for closure and capping of Bora Ridge and to develop a transfer station.





## Tweed Shire Council

Over the 15-16 year Tweed have progressed in a number of areas including a site master plan which is looking at thier short, medium and long term growth at the facility. The master plan will assist in the way Tweed manage thier waste streams and control the traffic flow on site. The first part of the works will include the FOGO processing and curing area, relocation of the site offices and amenities, upgrade of the weighbridge and the redirecting of the reuse yard traffic with the incorporation of a new saw tooth design transfer station to be placed prior to the weighbridge. The latter stages of development are looking at site road construction, cell development, post operational rehab, phyto capping, legacy issues and infrastructure required to support operations in the longer term.

Tweed is also currently in talks with the EPA in the reviewing of both site Environmental Protection Licences to provide a more refined waste and processing licences for the site. Part of the review will include the licences surface and groundwater monitoring program which will investigate current monitoring practices and monitoring intervals to remove any historic inefficiencies and to provide greater understanding of monitoring requirements from a laboratory and site supervision/operations perspective.

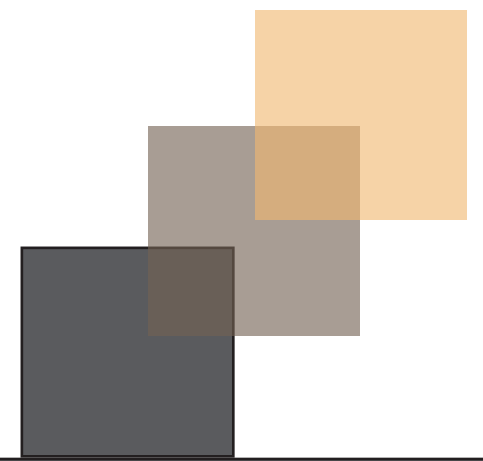
Operationally, works are continuing in the development and remediation of the landfill. Current improvements are focussed on the legacy landfill cells, the hydraulic load capacity of the vetiver fields and the ability of the cap to cope with the introduction of a phyto cap on the old parts

of the batters. A more efficient irrigation system for the vetiver fields will be introduced.

The works being undertaken include;

1. Improved leachate holding capacity by increasing the depth of the capping's vegetation layer and its ability to limit the infiltration of stormwater,
2. Restoring the irrigation fields profile which has undergone consolidation since its final capping due to differential settlement,
3. Control the runoff separation by diverting clean stormwaters into sedimentation ponds and away from leachate collection, with Improved stormwater diversion and management to ensure there is no pollution of surface and ground waters onsite.

Works are also continuing on the sites stormwater infrastructure which includes the introduction and extension of concrete drainage network on high flow areas of the old landfill to limit the need for reparation following heavy rain. The development included the installation of a larger headwall limiting the risk of erosion during significant rainfall events.



# 2.2

## Resource Recovery/Waste Diversion Reporting from July 1<sup>st</sup> 2015 to 30<sup>th</sup> June 2016



Regional Recycling/Diversion	Tonnage
Hazardous Waste	60
Events Recycling	62
Kerbside Commingled Recycling	33802
Drop Off Recycling	7025
Kerbside Food And Garden Organics	32619
Drop Off Garden Organics	15495
C&D Recycling	25871
Oil Recycled	69.5
Tyres	63
E-waste	313
Metal	6086
Concrete	11720

# 3

## MANAGEMENT, GOVERNANCE & FINANCE

NE Waste provides tangible benefits to Member Councils through programs aimed at delivering efficiencies and cost savings and promoting innovation and excellence in waste and resource management.

NE Waste has the following objectives:

- ▶ Collectively discuss and investigate the future waste management needs of the region and of Member Council areas.
- ▶ Provide a coordinated approach to waste management and minimisation.
- ▶ Avoid duplication of effort between member Councils.
- ▶ Confirm a commitment to reduce the volume of waste to landfill.
- ▶ To exchange knowledge between member Councils on waste management issues.
- ▶ To formulate draft policies, strategies and guidelines in relation to regional waste management and education needs.

# 3.1



## Governance of the Group

The role of host Council is important in ensuring our effective operation and in June 2015 Clarence Valley Council became the new host Council for North East Waste.

The NE Waste Memorandum of Agreement expired in June 2016 and a request was made to renew the agreement with some minor changes. This was approved and a new agreement is in place. The member Councils in 2015-16 and their delegated officers were:

Ballina Shire	Cheyne Willebrands, Jen Hellyer
Byron Shire	Lloyd Issacson
Clarence Valley	Ken Wilson, Richard Roper
Kyogle	David Bell
Lismore City	Kevin Trustum Phil Klepzig
Richmond Valley	David Timms, Carla Dzendolet
Tweed Shire	Rod Dawson, Michael Dobbs

# 3.2

## Meeting and Reporting

NEWaste meets at least 6 times per year. Meetings are held bi-monthly and rotated to each member Council. Each Council is entitled to a single vote, with decisions carried by majority vote. A tied vote shall be a motion lost.

In addition, a meeting of NE Waste contractors is held on alternative months to allow updates to the Coordinator, resource sharing and support across projects.

Regional waste groups meet with the NSW EPA quarterly in Sydney and regional areas under the banner of RENEW NSW. These meetings include an update of each groups projects and achievements, as well as encouraging discussion of issues that challenge the regional areas.

Under the Waste Less Recycle More Initiative reporting to the EPA by the waste group is annual. Once reporting is complete, funding is allocated for projects and administration. Grant funded projects have a different reporting regime, that varies depending on the funding section and structure of the program. There are progress and milestone reports for most projects but some non-contestable funding, such as the Better Waste Recycling Fund, are also annual.

# 3.3



## Sustainability Aims

While NE Waste has no formal policy, our contractors endeavour to minimise our footprint by choosing to:

- ▶ Offset air travel
- ▶ Carpool when possible
- ▶ Purchase local or Australian made products
- ▶ Adopt reuse and repair where possible
- ▶ Minimise waste and compost and recycle
- ▶ Use energy and water efficiently
- ▶ Make socially and environmentally ethical choices when operating for NE Waste

# 3.4

## Finances

The NSW EPA provides funding to develop and implement our projects and NE Waste reports on our outcomes, achievements and resource recovery figures on an annual basis. In addition, each member Council contributes between \$0.80 - \$1.00 per head of population towards operations, project development and implementation. This is capped at maximum of 50,000 residents. This means each Council shares in decision-making and contributes a proportionate share of running costs and project expenses.

Not all voluntary waste groups are fortunate enough to operate under this model and NE Waste appreciated that this combined expenditure allows us to develop and deliver high quality programs. Additional funding is sought from grant programs such as the Environment Trust and the Waste Less Recycle More initiative for specific projects.

In 2015-16 NE Waste was again very successful in securing additional funds from the EPA and Environment Trust and our operation budget was approximately 1.2 million dollars.

# 3.5



## Procurement & Contracts

NE Waste can authorise expenditure for works or services by resolution at a meeting of the Working Group. Unless otherwise directed by the Working Group, procurement is undertaken in accordance with the procedures of the Host Council. The Host Council is responsible for the calling of and awarding tenders. The coordinator and group assists the Host Council by preparing any technical specifications and tender documents, assessing tenders; and making a recommendation to the Host Council regarding the preferred tenderer.

NE Waste delivers its projects through the engagement of contractors and consultants. This engagement is made under the procurement policies of the Host Council.

In 2015-16 consultants managed projects in the role of:

- ▶ Coordinator – Jeanie McKillop
- ▶ Education Coordinator – Linda Tohver
- ▶ Business Waste Reduction Coordinator – Kim Potter
- ▶ Illegal Dumping Coordinator – Tash Morton
- ▶ Community Recycling and Litter coordinator – Karen Rudkin
- ▶ Website Management and Maintenance – Flavio Stankievich

In addition preferred suppliers were engaged as:

- ▶ Green House site managers – Joanne Hoy, Sally Prescott and Wren Mclean
- ▶ Greenhouse Performers – Peter Notley
- ▶ Education consultants – Samala Heart, Barb Jensen



3.6 

# Financial Statement

## Revenue 2015 -16

### Expenditure

Project	Total Project Budget	Known Grants/Revenue	Total expenditure
Coordination and Project Management	\$95,000.00		\$90,351.44
Communication	\$25,000.00		\$26,979.99
Business Waste Reduction Project	\$55,000.00		\$55,603.73
BIN TRIM	\$144,690.00	\$144,690.00	\$72,362.49
Development & Funding of the Strategic Plan	\$100,000.00		\$37,582.73
Waste Education	\$100,000.00		\$113,697.94
RENEW	\$15,000.00		\$6,709.16
Illegal Dumping Project	\$55,000.00		\$44,558.32
Community Recycling Centres	\$356,574.00	\$341,574.00	\$330,669.81
Hazardous Waste Project/hcc	\$55,000.00	\$35,000.00	\$16,789.54
Love Food Hate Waste (LFHW)	\$20,000.00		\$34,609.83
Better Waste Recycling Fund (BWR Fund)	\$87,132.00	\$87,132.00	\$70,523.64
HADS	\$22,875.00	\$22,875.00	\$27,621.07
Litter	\$20,000.00		\$7,911.87
Training	\$12,000.00		\$8,341.53
Education Coordination & Management	\$68,000.00		\$57,738.70
<b>TOTALS</b>	<b>\$1,231,271.00</b>	<b>\$631,271.00</b>	<b>\$1,002,051.77</b>
<b>OTHER REVENUE</b>			
EPA Regional Waste Group Funding		\$309,493.00	
Council Contributions		\$231,000.00	
Reserve		\$118,541.00	
<b>TOTAL REVENUE Known</b>		<b>\$1,290,305.00</b>	





NORTH EAST WASTE ANNUAL REPORT  
2015 -2016

Publish:11.16 Edition version number:#1

Design by:  
Flui-D Multimedia Productions

North East Waste  
[www.newaste.org.au](http://www.newaste.org.au)

***END OF DOCUMENT***